



2026 ROAD TO LE MANS

DRIVERS AND TEAM MANAGERS BRIEFING

09.06.2026



LE MANS CUP

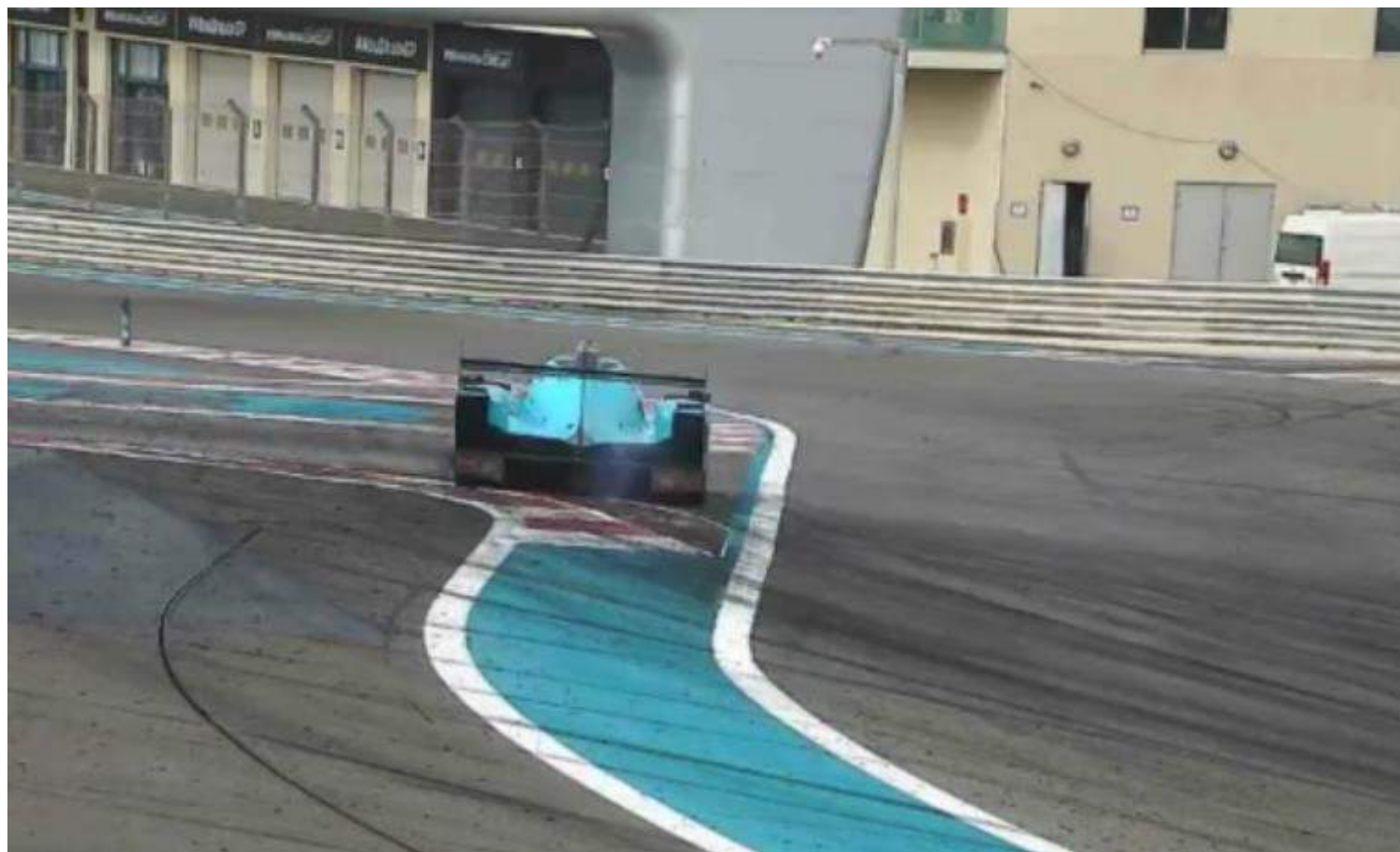


SEASON NOTES

2026 MICHELIN LE MANS CUP



TRACK LIMITS



TRACK LIMITS



TRACK LIMITS

Appendix L ISC Chapter IV Art. 2.c)

Drivers must use the track at all times and may not leave the track without a justifiable reason. For the avoidance of doubt, the white lines defining the track edges are considered to be part of the track but the kerbs are not.

Track Marshals Calls
(Judges of Fact)
+ Detection Cameras

Track Limits Infringements
Count Per Driver Per Session*
(no reset / race = one session)
* Qualifying – laptime deleted

4th
Infringement



5th
Infringement

Driver Nr. X under
investigation for Constantly
Abusing Track Limits

DRIVING STANDARDS – 3 CATEGORIES



DRIVING STANDARDS – 3 CATEGORIES



DRIVING STANDARDS - OVERTAKING



DRIVING STANDARDS – DOUBLE YELLOW



DRIVING STANDARDS – OVERTAKE OFF TRACK



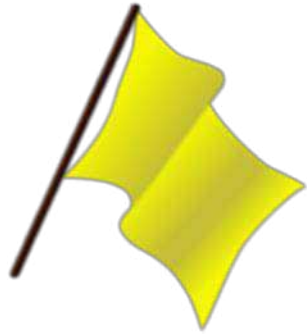
DRIVING STANDARDS – STOPPING / ISSUE



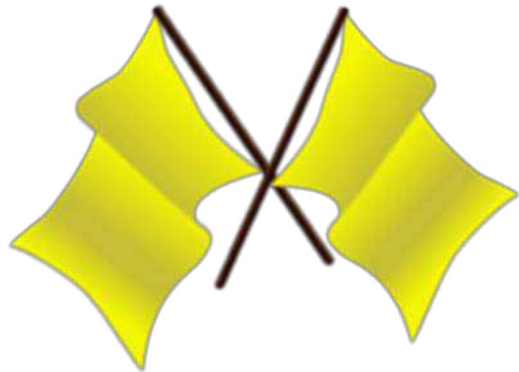
DRIVING STANDARDS – PIT ENTRY



YELLOW FLAGS



- DANGER
- NO OVERTAKING
- REDUCE SPEED
- PREPARE TO CHANGE DIRECTION



- DANGER
- NO OVERTAKING
- REDUCE SPEED : ABORT THE LAP
- PREPARE TO STOP
- MARSHALS AND/OR VEHICLES MAY BE EXPOSED

CREW SAFETY



ROUND 03



ROAD TO
LEMANS



OFFICIALS

RACE CONTROL



Gwen BOURCIER



Ronnie ANDERSEN



Yaiza BONET



Pauline SCHOOFs



Christian WAHLEN

TECHNICAL DELEGATES



Antoine CREVENAT



Christian DRUENKE

PIT LANE



Sébastien CHARREAU

TIMEKEEPING



Filippo SALVADORI

STEWARDS



Willem COOLIS
MLMG Chairman of the Stewards



Mathieu REMMERIE
International Steward



Arthur PELOSI
National Steward



Simonetta MANARA
Secretary of the Stewards



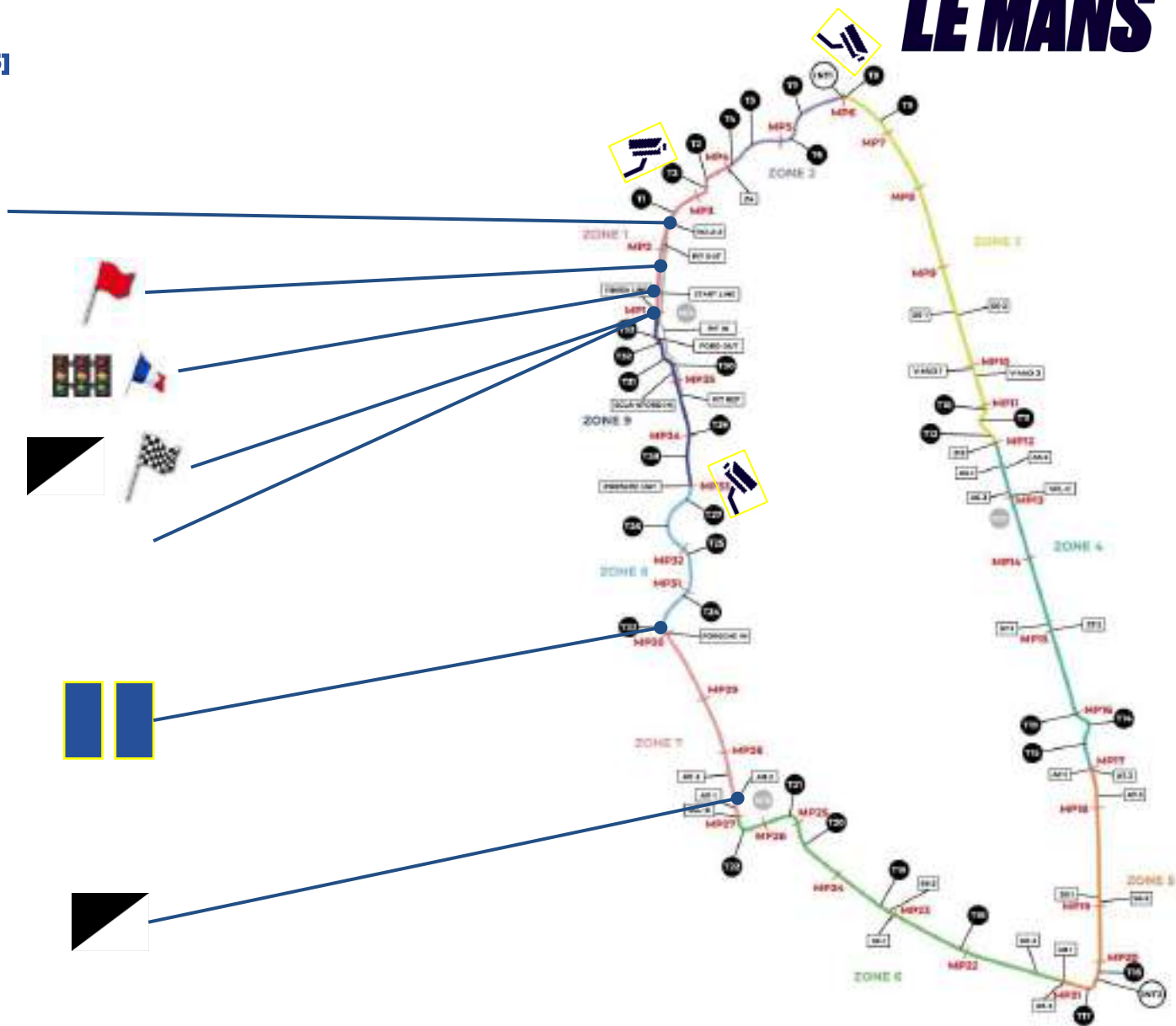
Gabriel AUBRY
MLMG/LES Driver Advisor

TRACK MAP

[V3-2026 3/6/2026 10:05]

ROAD TO
LEMANS

- SC LINE 2
- VIRTUAL RED FLAG LINE AT THE MICHELIN TOTEM
- START LINE
- FINISH LINE / CONTROL LINE / RD SIGNALLING
- SC LINE 1
- GRID POSITION 2X2 (MP30)
- RD SIGNALING REPEATER (MP27)



PIT LANE MAP

RED FLAG LINE

**FINISH LINE
SC RESTART LINE
RD Signalling**

SC LINE 1



SC LINE 2



START LINE



PIT ENTRY ROAD



PIT ENTRY – SC LINE 1



PIT ENTRY CLOSED LIGHT



PIT ENTRY CLOSED LIGHT - REPEATERS

ROAD TO
LEMANS



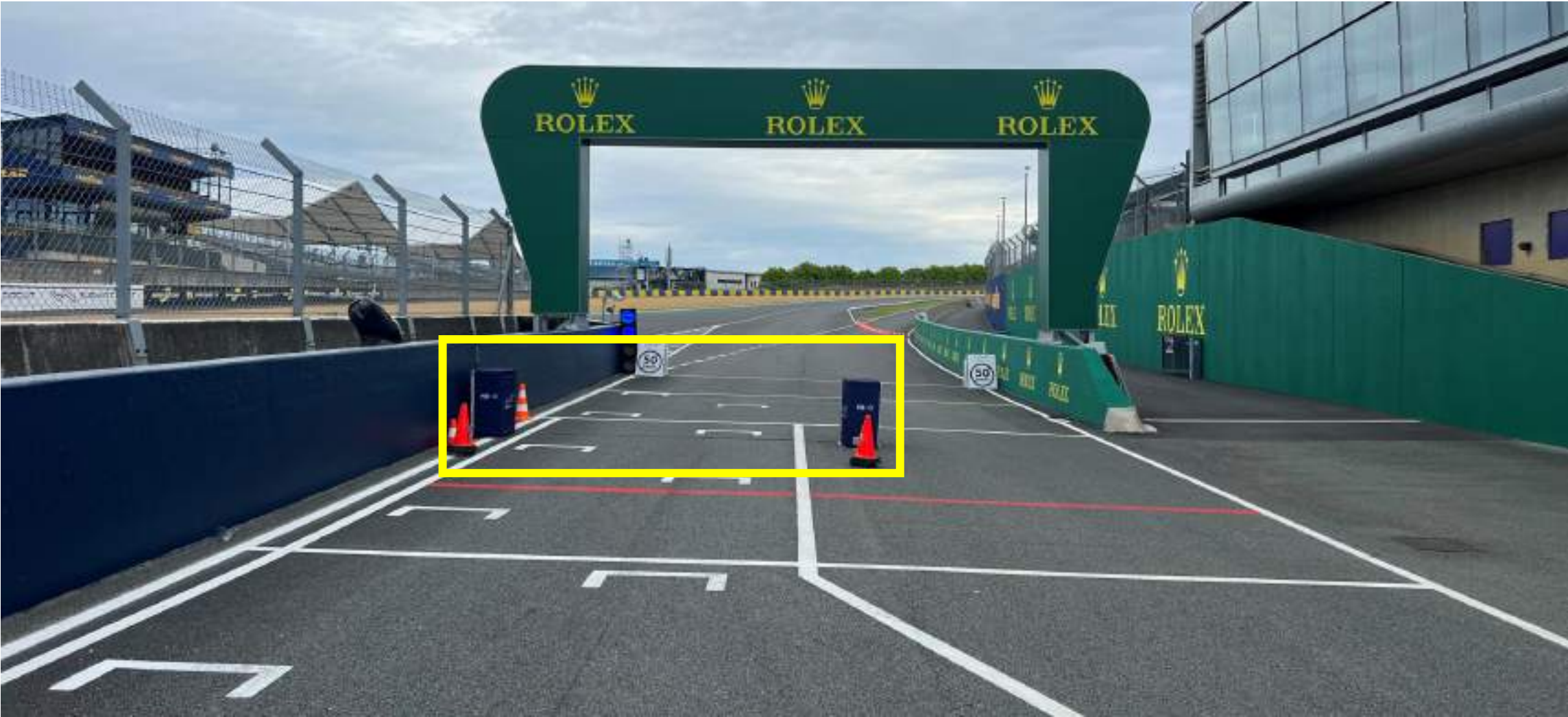
50KPH SPEED LIMIT – PIT ENTRY LOOP **ROAD TO LEMANS**



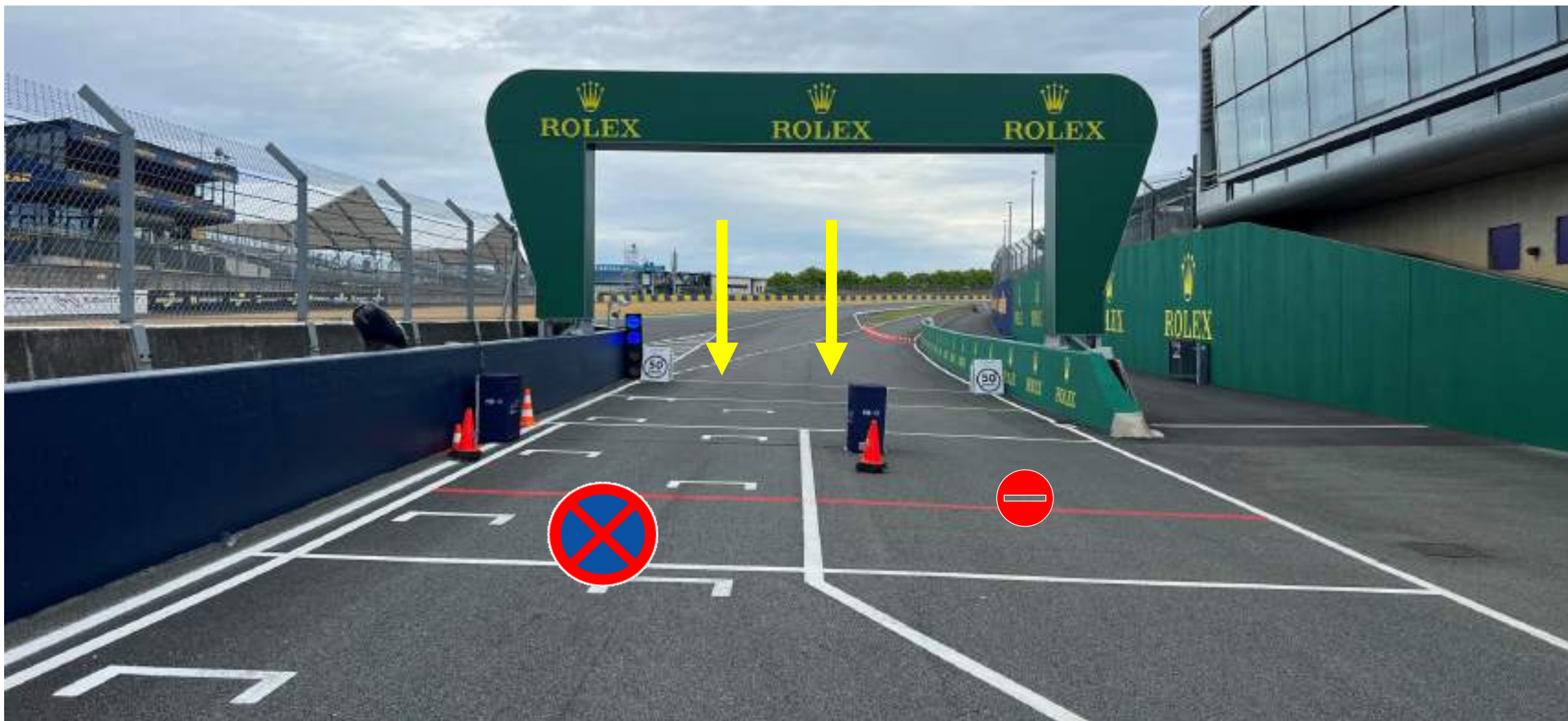
PIT LANE AREAS



RFID STATIONS



PIT EXIT – END OF SPEED LIMIT

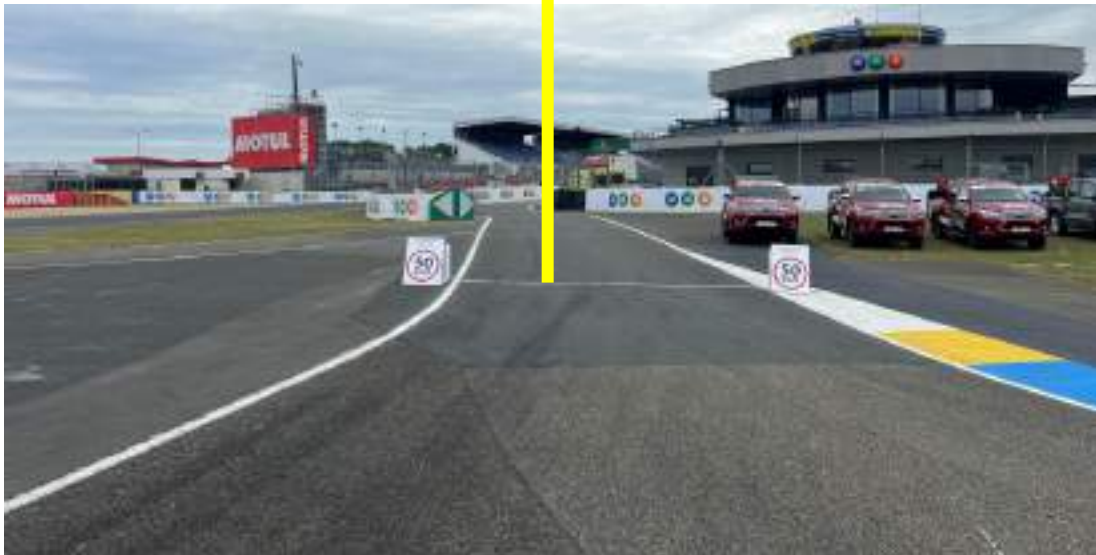


PIT STOP TIME REFERENCE TIME [PIT IN – PIT OUT]

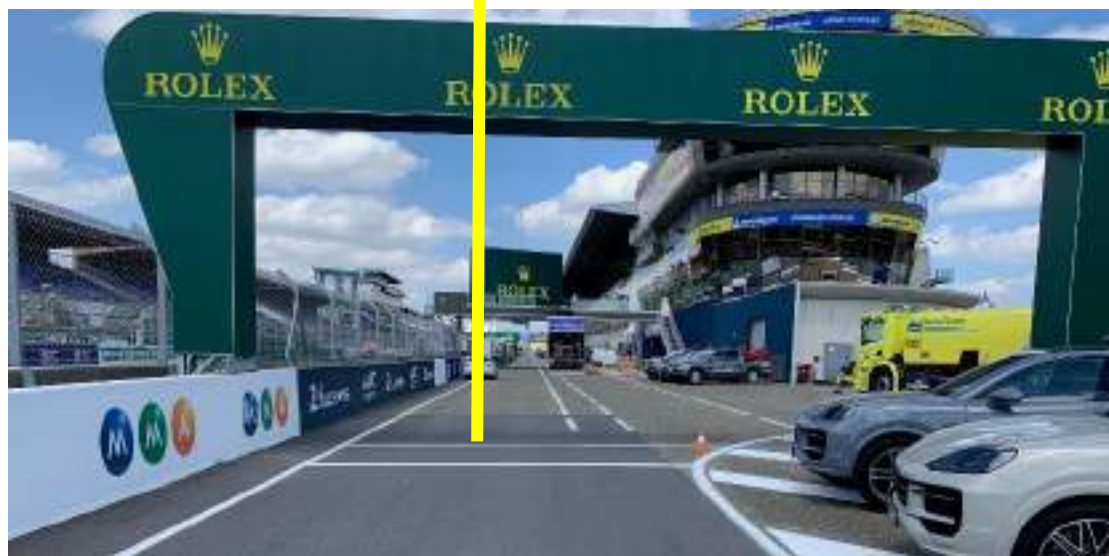
MINIMUM THREE PIT STOPS RESPECTING PSRT TO BE COMPLETED BEFORE 2H39MIN59.999SEC ELAPSED TIME



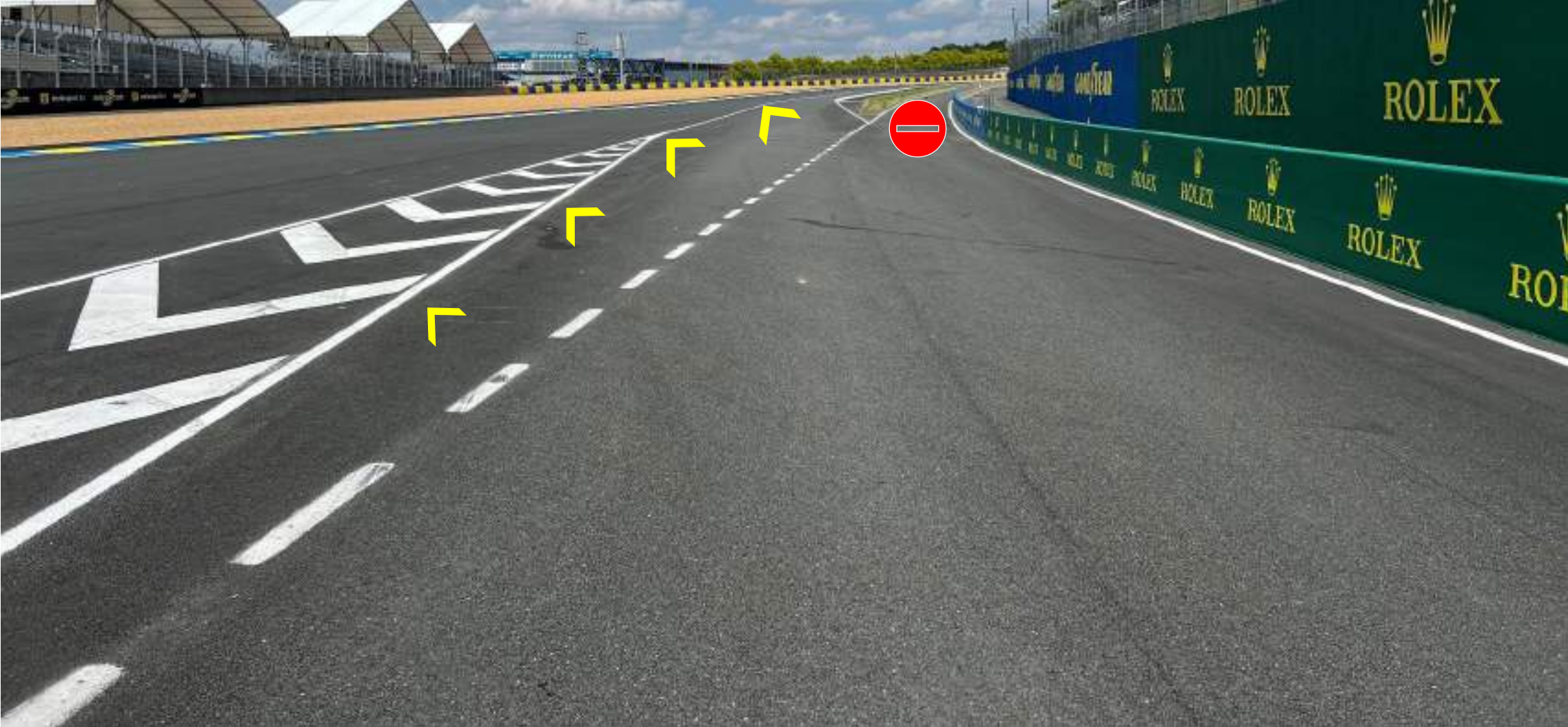
175sec



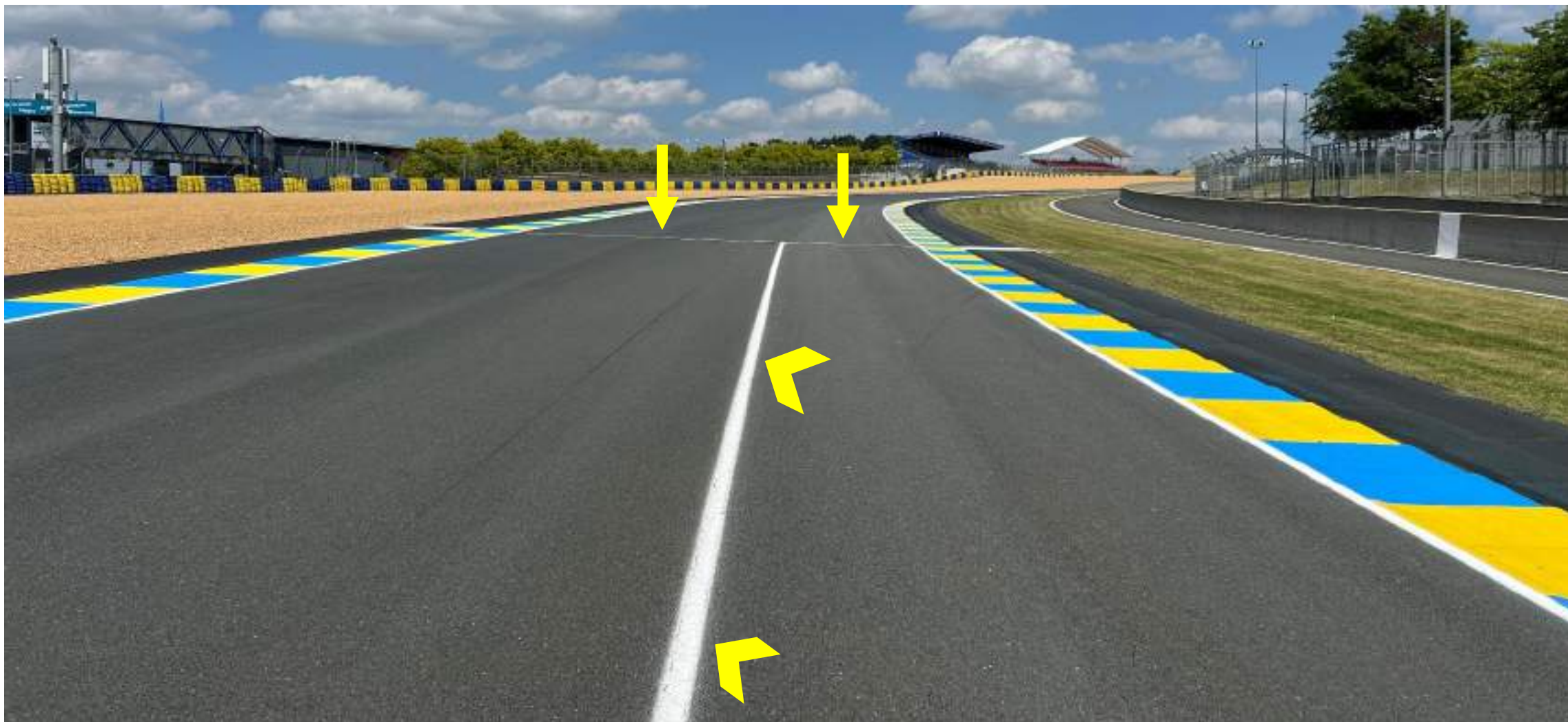
WORKING LIMITS [Arch > Arch]



PIT EXIT ROAD



PIT EXIT ROAD – SC LINE 2

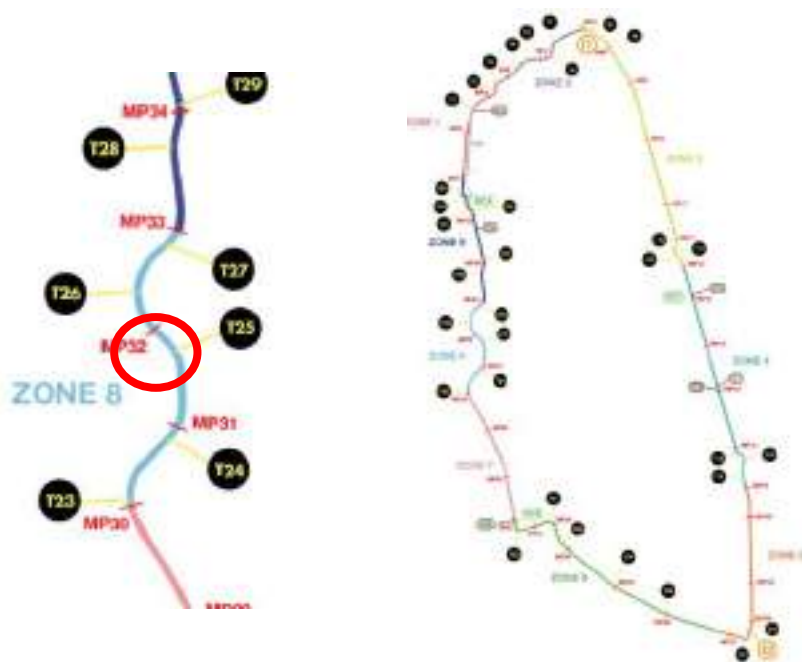


OPENINGS – DIGITAL PANELS



OFF TRACK T25

Drivers missing the apex at T25 (4 wheels behind the blue line) must drive through the entire escape road to rejoin the track



OFF TRACK T25



OFF TRACK T25



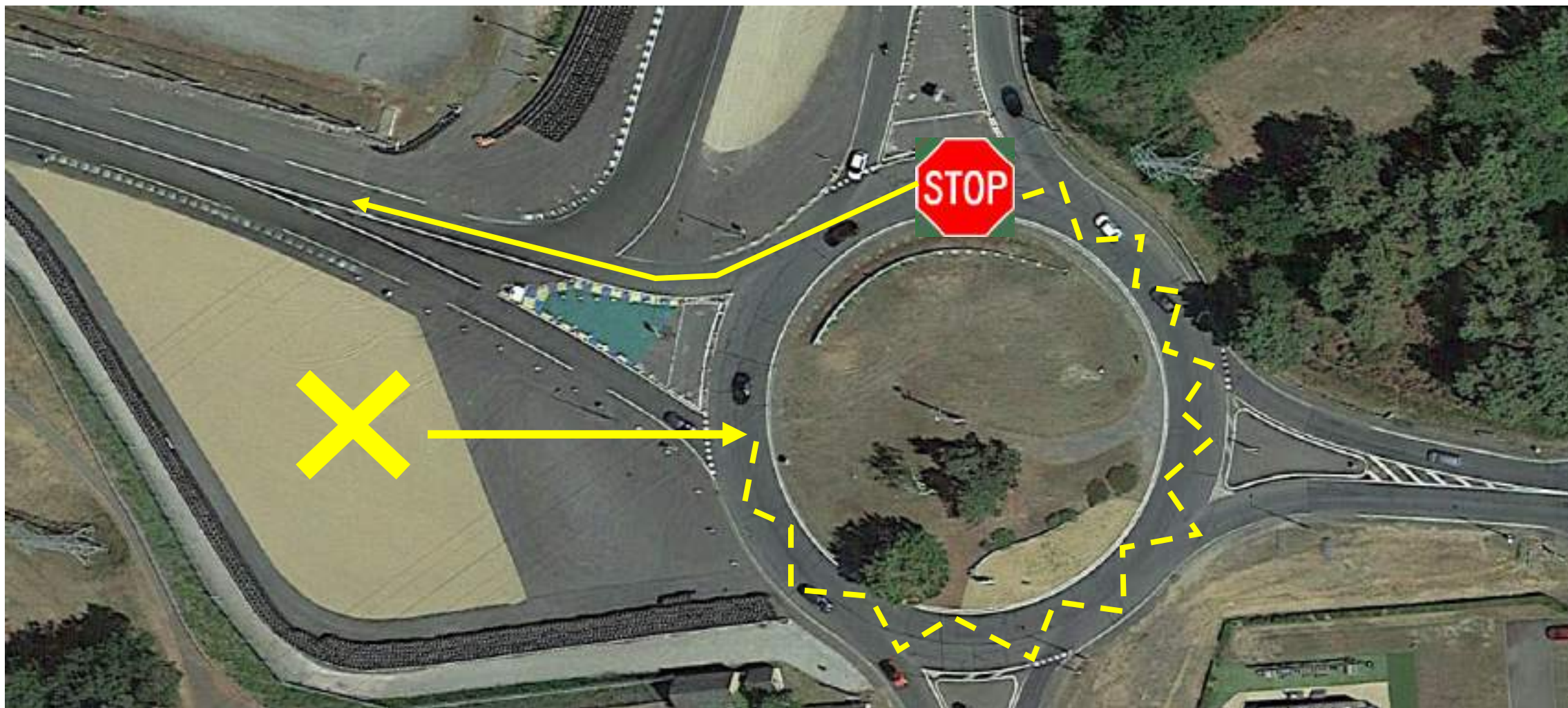
OFF TRACK T25



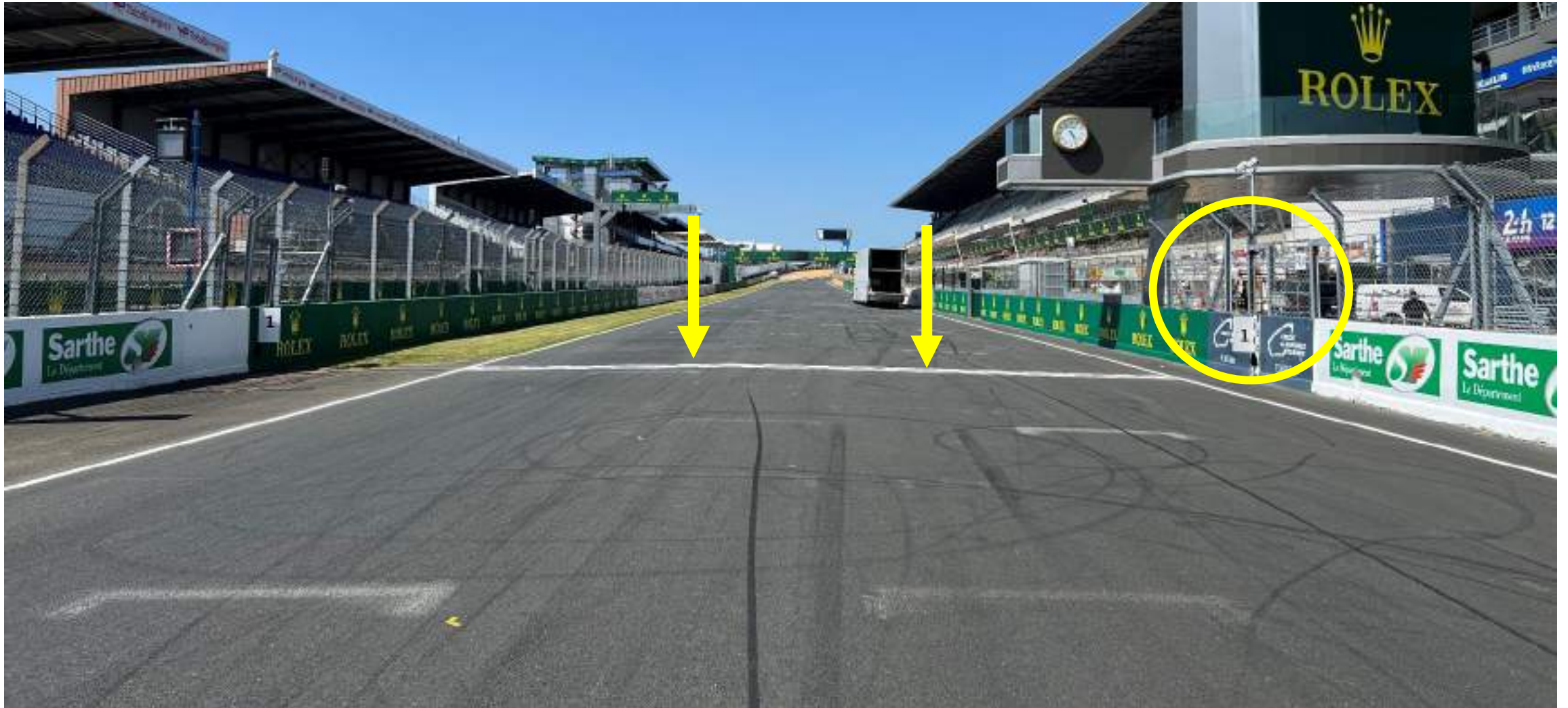
TRACK LIMITS



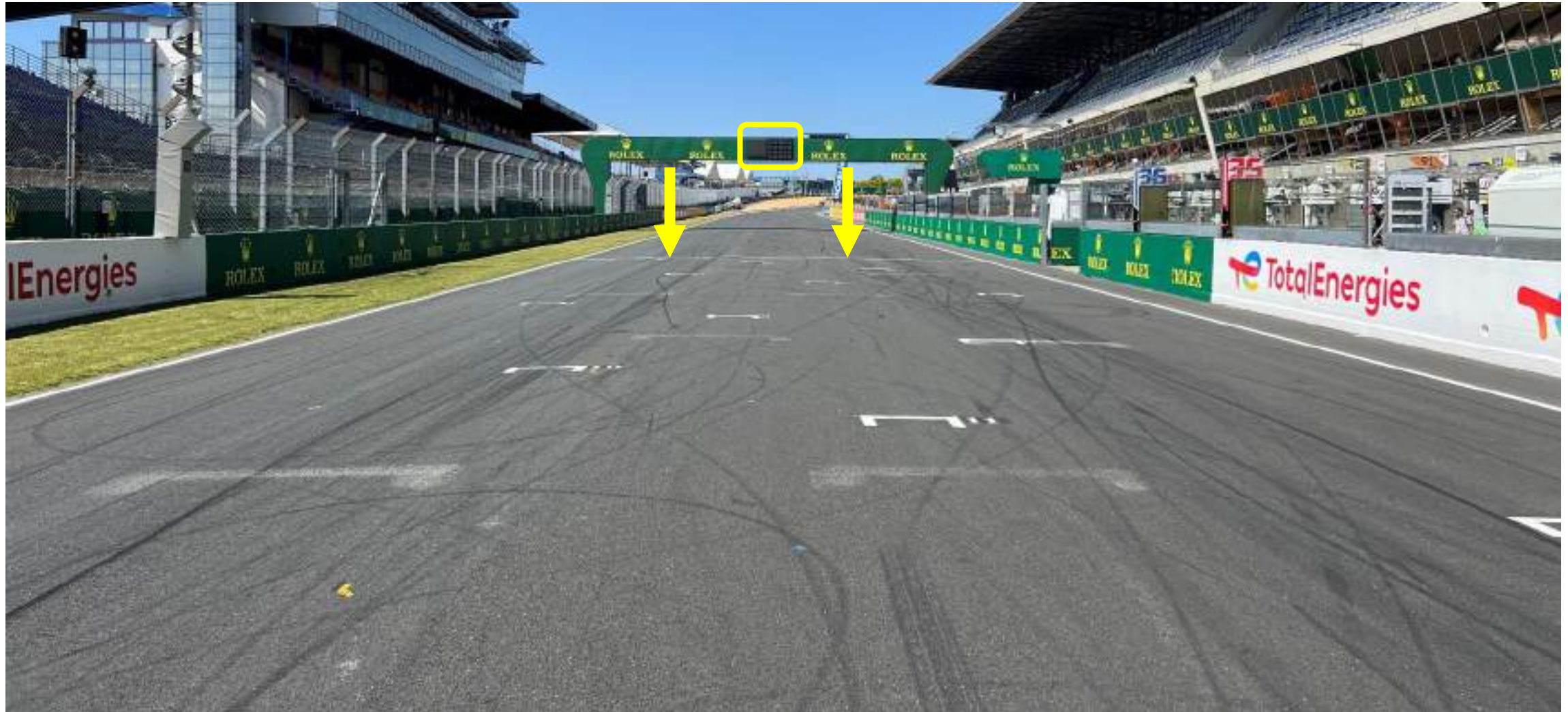
GRAVEL TRAP MP20



THE LINE – SC RESTART – RD SIGNALLING



START LINE – LIGHTS – RD REPEATER



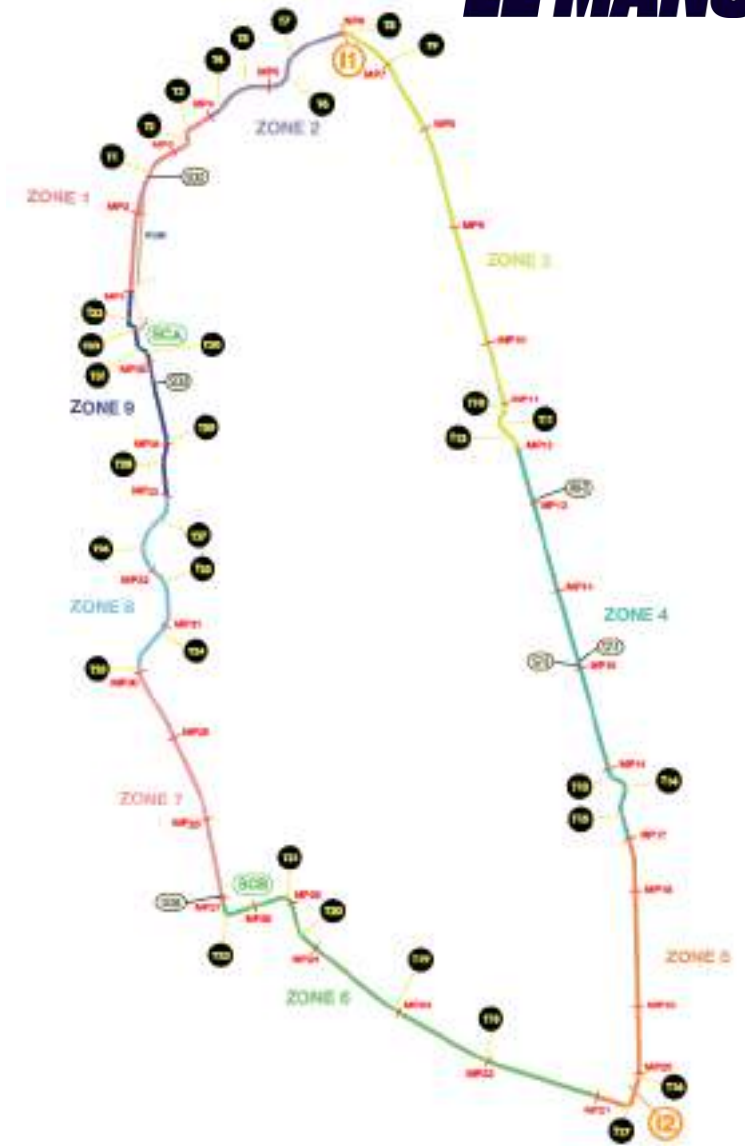
RD SIGNALING REPEATER MP27



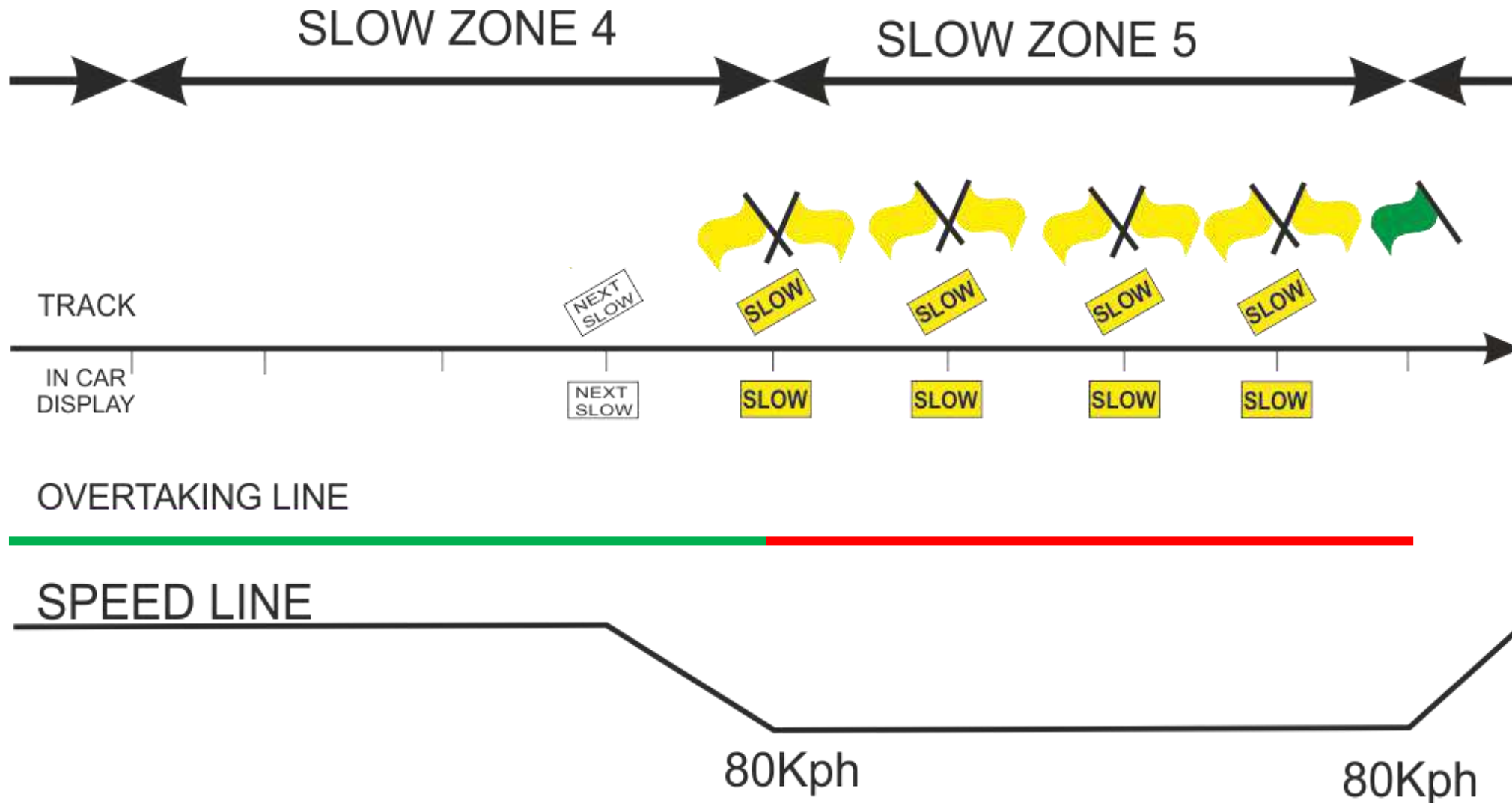
SLOW ZONES

9 SLOW ZONES

- “Next Slow” will be the MP preceding the start of the Slow Zones
- Several “SLOW ZONES” at the same moment ex: Z1 +Z5 or Z7 until Z9
- COUNTDOWN TO DEPLOYMENT



SLOW ZONES

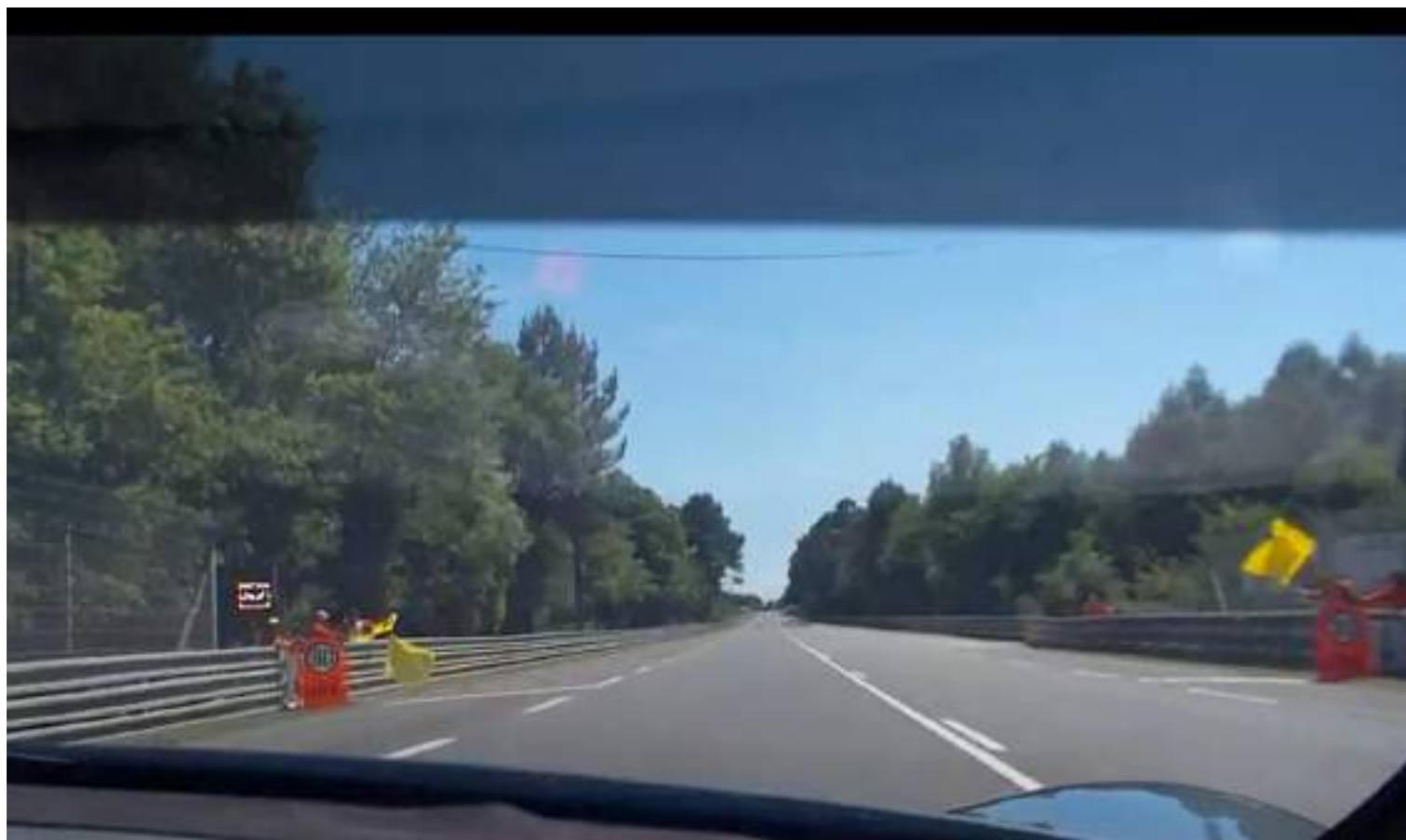


SLOW ZONES – NEXT SLOW



SLOW ZONES

NO OVERTAKING! SINGLE LINE!



SLOW ZONES - END

END OF SLOW ZONE
OVERTAKING IS ALLOWED ONLY AFTER THE MP LINE



FULL COURSE YELLOW

- **FCY WILL BE DEPLOYED AT TOD [HHMMSS]**
- **PIT ENTRY IS CLOSED**
- **COUNTDOWN 10 > 0**
- **KEEP THE SAME GAP TO THE CAR IN FRONT**
- **SPEED LIMIT 80kph**



RED FLAG – PRACTICE SESSIONS

- **RD will announce RED FLAG on radio**
- **RED Flags (+ Track Side Panels) deployed around the track**
- **NO COUNTDOWN**
- **SPEED LIMIT 80kph**
- **All cars to head to the pit lane**



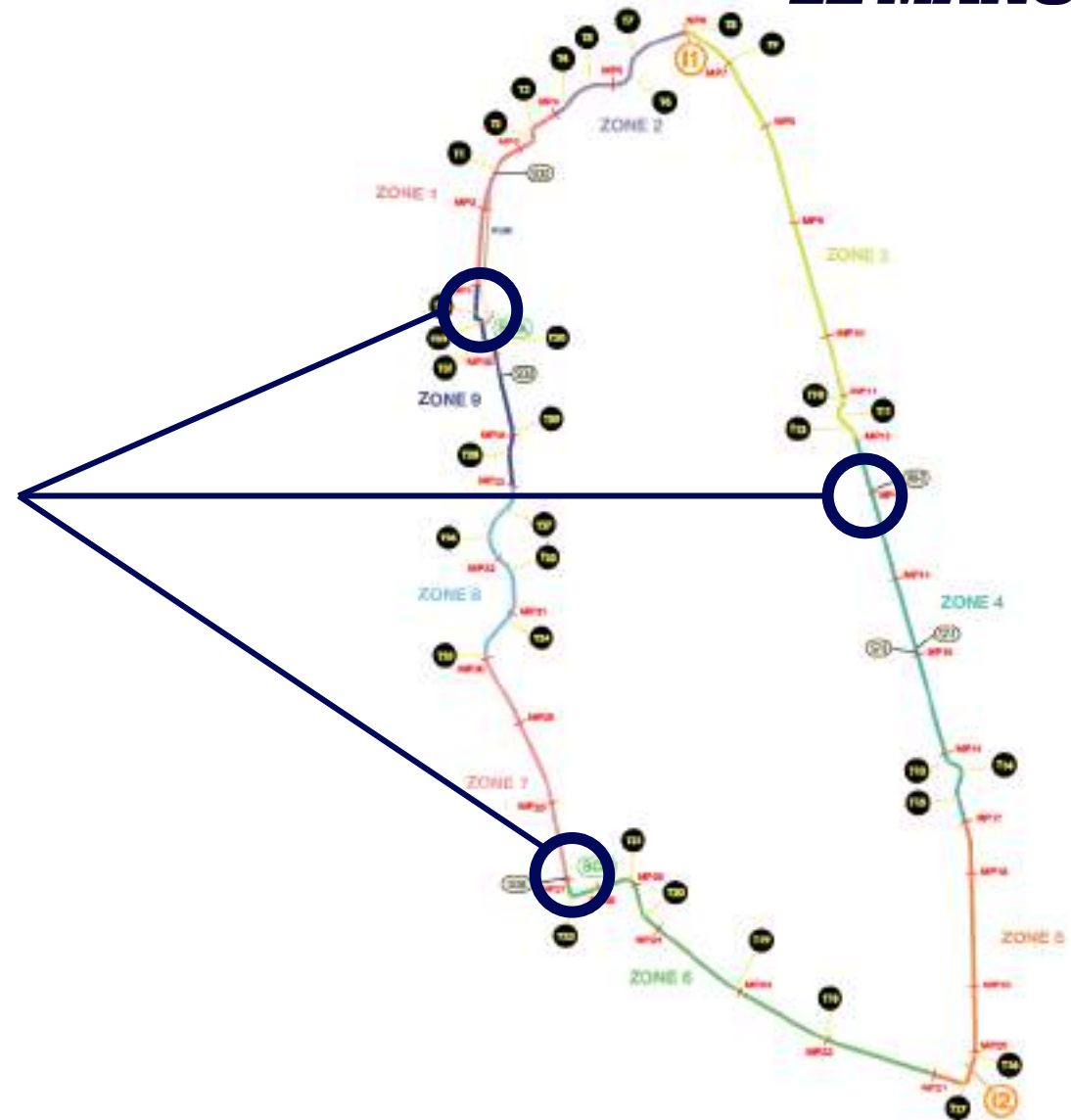
RED FLAG - RACE



- RD will announce RED FLAG on radio
- All cars must head to the starting grid and stop at the virtual line and park in a line on the LHS
- Mechanic [Red Armband] access to the grid via Gate in front of Garage 19

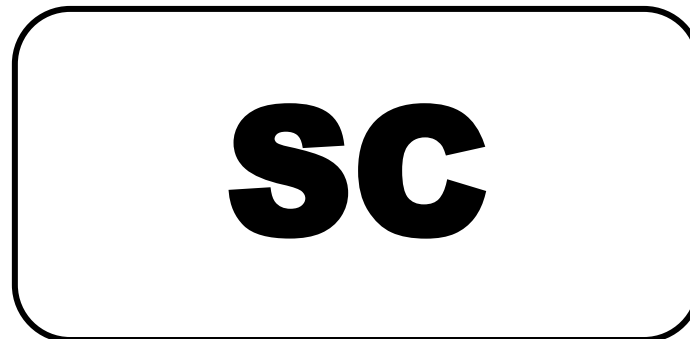
SAFETY CAR

- 3 Safety Cars deployed simultaneously
- Entering & Exiting the Track: MP1 / MP13 / MP27
- Cars have to stay in line behind SC
- No weaving in the area(s) of the intervention(s)



SAFETY CAR

- NO COUNTDOWN
- **RD will announce SAFETY CAR on radio**
- NO OVERTAKE
- 5 CARS LENGTH GAPS
- NO ERRATIC DRIVING OR UNNECESSARILY SLOW



SAFETY CAR - RESTART



Behind SC A, you may only overtake after the Control Line (MP1)



Behind SC C, overtake after passing the line at MP 13 (after first chicane)

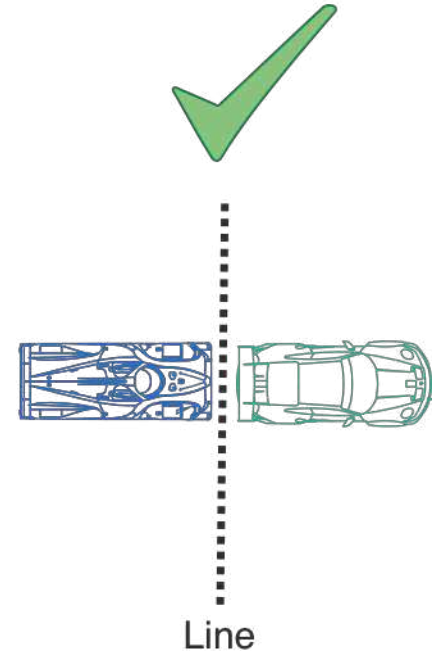
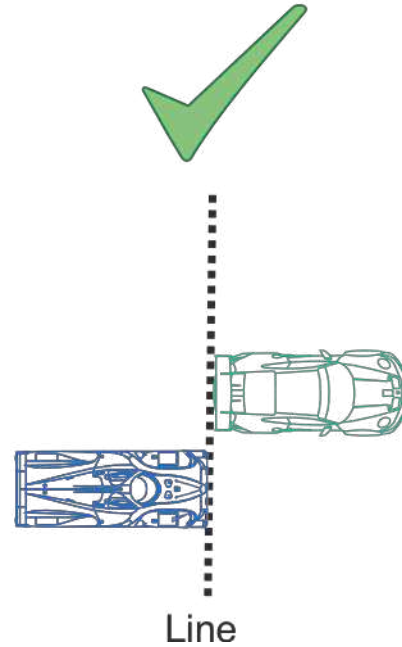
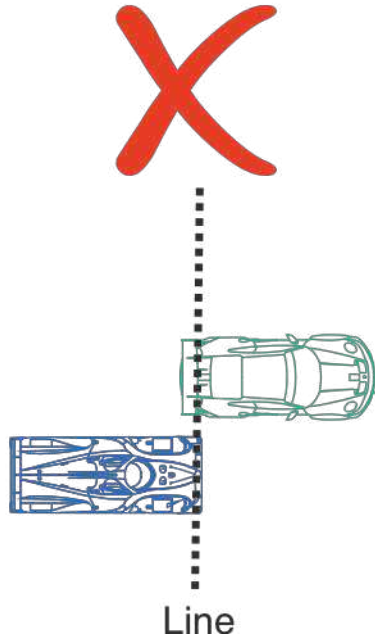
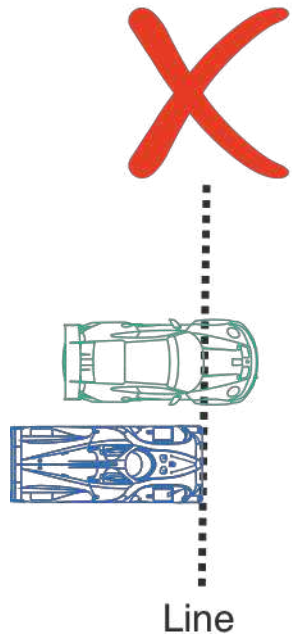


Behind SC B, overtake after passing the line at MP 27 (after Arnage)

Safety Cars maintain 120kph
after « lights off » signal

**NO OVERTAKING
BEFORE THE LINE(S)**

SAFETY CAR - RESTART



DOUBLE YELLOW FLAGS

- During SC, FCY AND RED FLAG procedures, double yellow flags will be waved at the marshal post preceding the incident / intervention.



START OF SESSIONS



**ALWAYS FOLLOW
INSTRUCTIONS FROM
OFFICIALS**



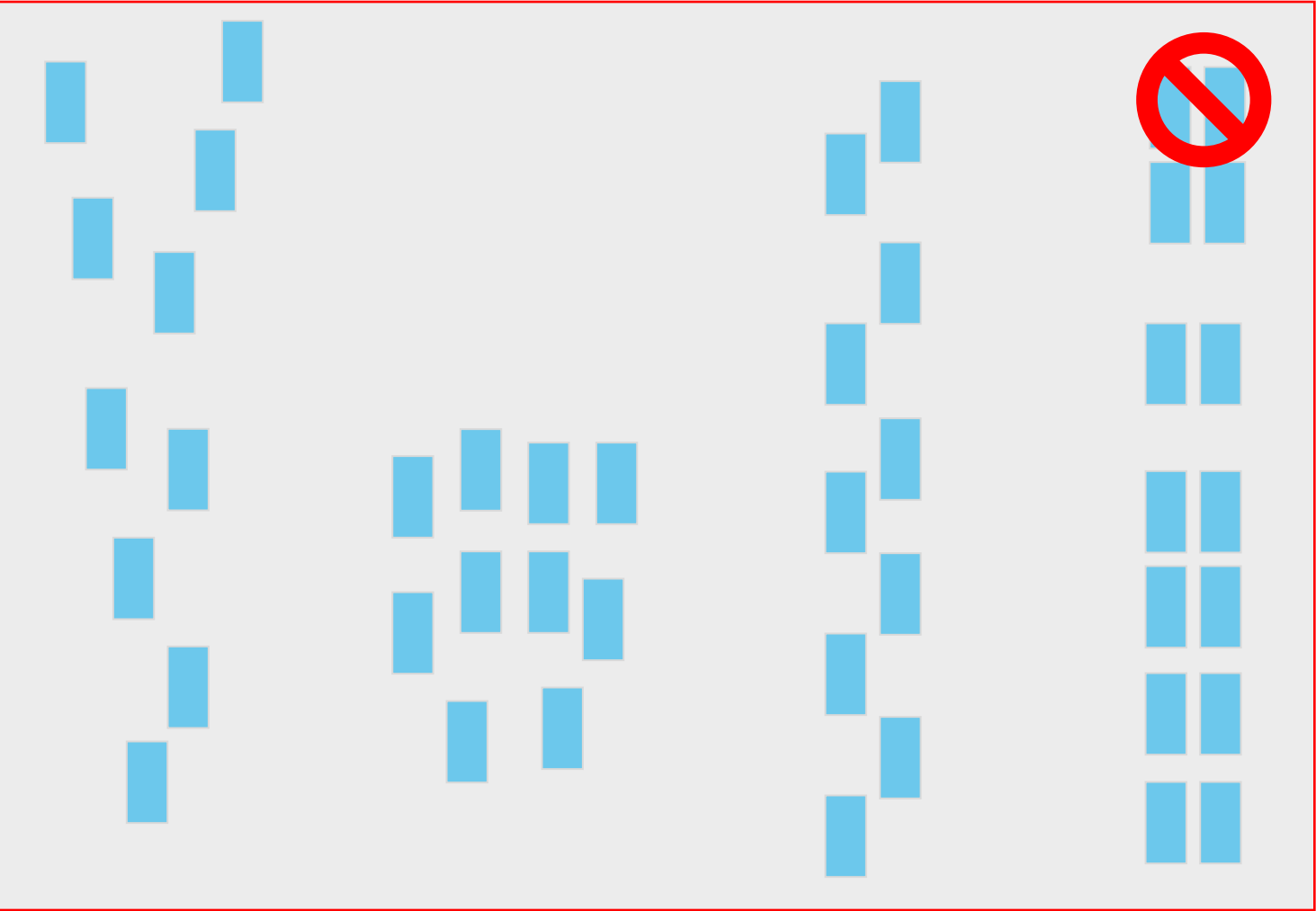
RACE START



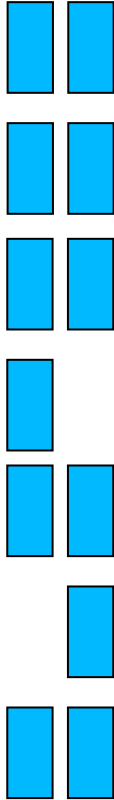
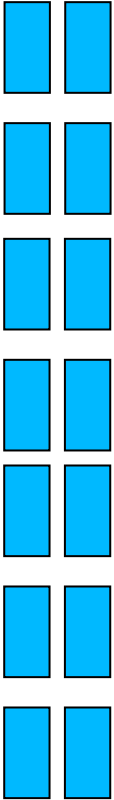
RACE START - GAPS



RACE START



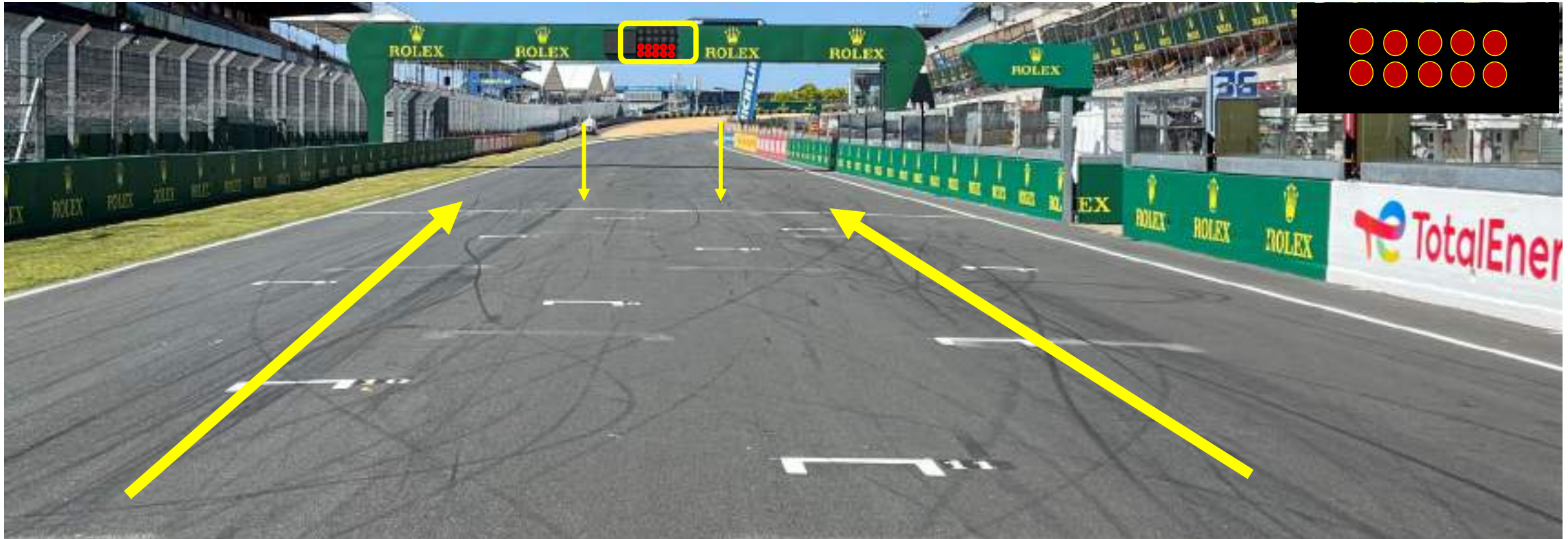
GAP TO
BE RESPECTED



START

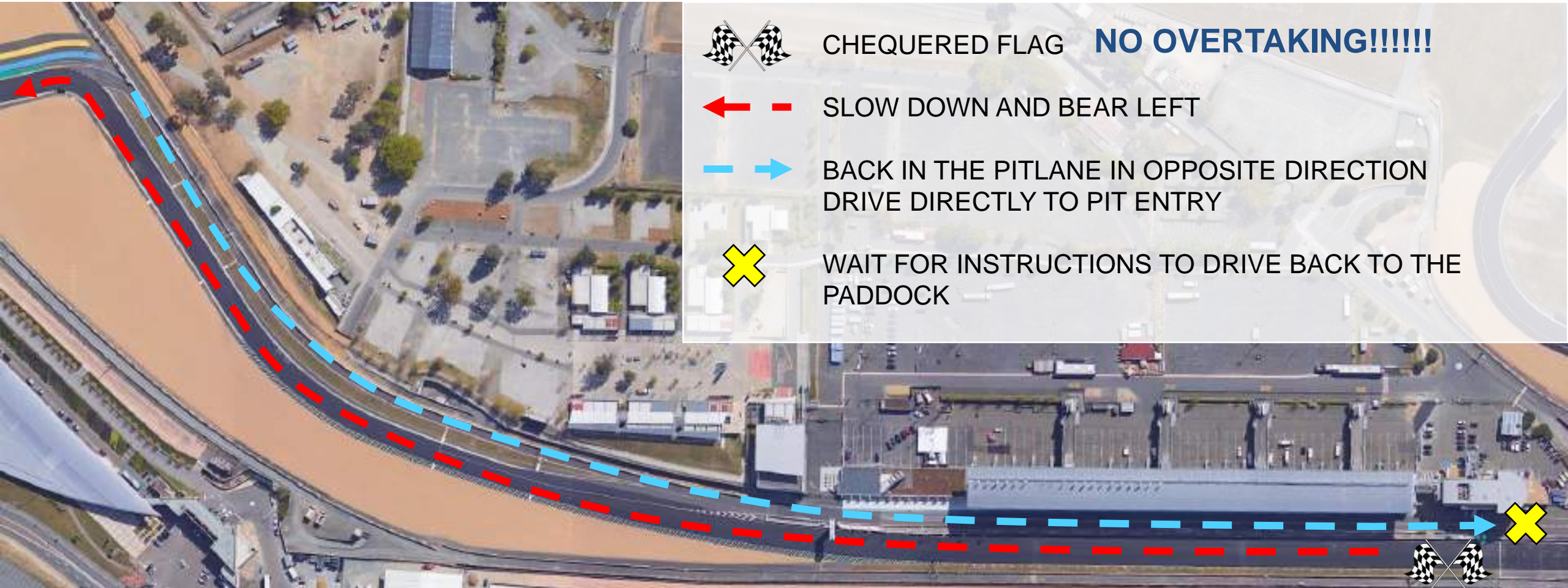
- The leading car will exit the track by pit entry. Front row drivers at constant speed until the starting lights switch off.
- Constant gap to the car in front.
- Drive through the grid in 2 parallel lines
- No lateral movement is allowed before crossing the start line.
- Lights off > front row drivers accelerate > following cars may follow their speed.
- No overtake before the line.

RACE START

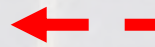


NO OVERTAKING
BEFORE RACE START SIGNAL RED LIGHTS OFF
AND CROSSING THE START LINE

END OF SESSIONS



CHEQUERED FLAG **NO OVERTAKING!!!!!!**



SLOW DOWN AND BEAR LEFT



BACK IN THE PITLANE IN OPPOSITE DIRECTION
DRIVE DIRECTLY TO PIT ENTRY



WAIT FOR INSTRUCTIONS TO DRIVE BACK TO THE
Paddock

END OF SESSIONS



SLOW DOWN AND BEAR LEFT



U-TURN AT THE MOTO PIT EXIT



BACK IN THE PITLANE IN OPPOSITE DIRECTION
DRIVE DIRECTLY TO PIT ENTRY

END OF SESSIONS



TRANSFER MAP [V1]



QUESTIONS



HAVE A GOOD RACE

TEAM MANAGERS TO STAY



GENERAL EVENT INFORMATION



TIMETABLE V4



RTLTM SPORTING REGULATIONS V3



MLMC COMMITTEE DECISION N°11



OTHER RACES: FIA WEC, FERRARI CHALLENGE,
PORSCHE CARRERA CUP BRAZIL



TRACK LIMITS COUNTER PAGE 7 (CAMERA DETECTION)



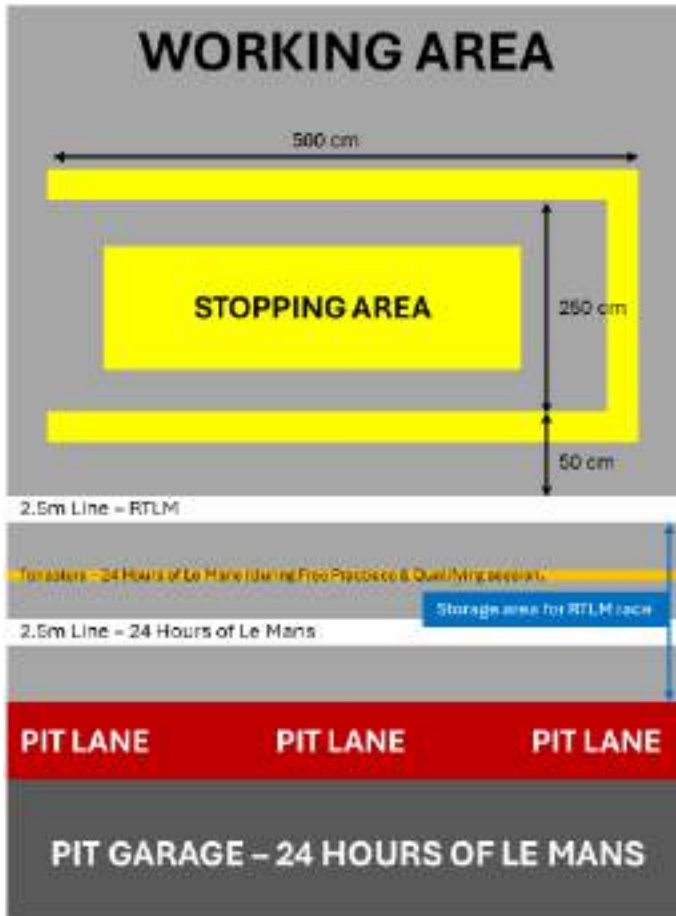
- Discord should be online 10min prior the session
- Discord pseudo for the Team Manager NUMBER OF CAR_NAME OF THE TEAM
- Reports via the **Incident Report Form**
- No Private Message during all sessions

Pit wall radio will be tested 5mins before each session



PIT LANE

THE CAR CONTROLLER (LOLLIPOP MAN) IS RESPONSIBLE FOR THE CONTROL OF THE PIT STOP & ITS SAFETY NOT ALLOWED TO DO ANY OTHER OPERATION.



- **Parking with a 45° angle accepted at the start or resumption of the session.**
- **QUALIFYING** – drivers may access to the fast lane directly when entering the pit lane.
- **USB Data Stick**
 - FP / Bronze / Quali – to be brought to Technical Delegate at the end of the session
 - Race - USB data stick to be brought to technical delegate after each pit stop

RTLTM KEY POINTS

- **ASSEMBLY AREA – Respect Timing & Instructions**
- **SLOW ZONES**
- **SAFETY CAR**
- **END OF SESSION PROCEDURES**
 - Drivers **MUST** stay in the car and drive back to the paddock under officials instructions, including end of races.
 - If cars are in pit lane at the end of sessions, mechanics should turn the car around [under the instructions of officials] and a driver should drive the car back to the paddock. If there is a mechanical issue, you'll be allowed to tow the car back with a quad.
 - If cars are non drivable, they'll be recovered by flatbeds.
- **STARTING GRID PROCEDURE**

START PROCEDURE – V1



- Driver to drive the car **under its own power** until his/her grid position



- Stop in the middle lane
- Mechanics push the car back at 45°

**HAVE A GOOD RACE
DO NOT HESITATE:
+33 6 23 43 49 97
g.bourcier@lemans.org**